


MN HIE Overview
May 20, 2010


© Copyright 2010 Minnesota Health Information Exchange, LLC. All Rights Reserved.



MN Health Information Exchange (MN HIE)

- **What is MN HIE?**
State-wide secure network and record locator service designed to share clinical and administrative information among healthcare providers in Minnesota and bordering states
- **Purpose**
Improve the health of all Minnesotans through more informed decision-making by the provider and patient at the point of care
- **Goals**
 - **Support interoperability across Minnesota**
 - Enhance safety, quality and reduce healthcare costs
 - Establish an economically sustainable business
- **Patient Controlled**
 - Consent at each visit
 - Ability to opt-out of clinical information exchange

2



MN HIE Governance Model

- MN HIE is a not-for-profit company with a public/private governance model including providers, health plans, and Minnesota state government
- **Founding members:**
 - Providers:**
 - Fairview Health Services
 - HealthPartners
 - State Government:**
 - Minnesota Department of Human Services
 - Health Plans:**
 - Blue Cross Blue Shield of Minnesota
 - Medica
 - Ucare

3

MN HIE Minnesota Health Information Exchange **Provider Payment Incentives**

'Meaningful Use' – Criteria for incentive payments

- Implement a qualified Electronic Health Record (EHR) System
- Exchange patient clinical information with other healthcare organizations
- Submit quality reporting to designated government departments

4

MN HIE Minnesota Health Information Exchange **MN HIE Approach**

- Patient Controlled and Patient Centered
- Operates across 5 domains: Governance, Technical Infrastructure, Business and Technical Operations, Finance and Legal/Policy
- Provides Connectivity for all Health Care Organizations
- Meets Providers 'where they are'
- Provides aggregated patient specific data
- Allows Single Sign On (SSO) and Patient Context to many applications or connections
- Federated Environment
- Centralized Secure Patient Directory (SPD)
- Centralized Record Locator Service
- Role Based Security

5

MN HIE Minnesota Health Information Exchange **We meet Providers 'where they are'**

Getting to Meaningful Use is a Journey

View data from other providers
Exchange data with other providers
Integrate data from other providers into system


Three ways to access Administrative and Clinical data via MN HIE:

1. Stand-alone Web Browser
2. Embedded into an Electronic Health Record
3. Interoperable Transactions

Providers may use more than one method to access MN HIE

One Pricing model regardless of access method


6



Minnesota Health Information Exchange Clinical Workflows

- **Clinical View**
 - Aggregated data from multiple sources
 - Gives 'snapshot' of patient's clinical status
- **Interoperable Exchange of Data**
 - Clinical Care Documents
 - Provides in-depth information from one provider
 - Episode of Care
 - Data from defined time period, one EHR
 - Useful in transition of care, referral situations

7



Minnesota Health Information Exchange Capabilities


Current

- Secure Patient Directory (SPD) with Record Locator Service (RLS)
 - 4.2 million patients
- Consent Management
- Opt-Out Capabilities
- Medication History
- Eligibility
- Immunizations
- Lab History
- Clinical Care Documents

Future

- Roadmap to Meaningful Use

8

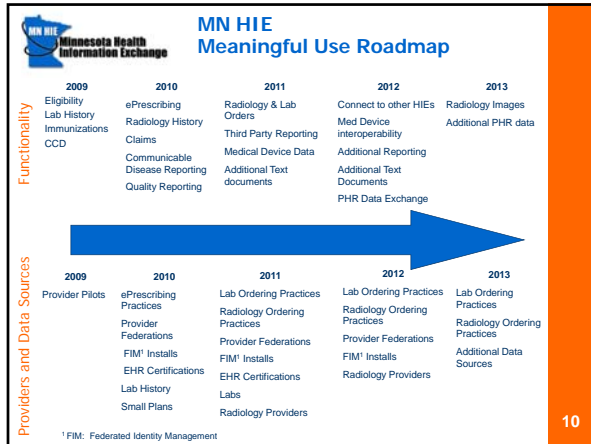


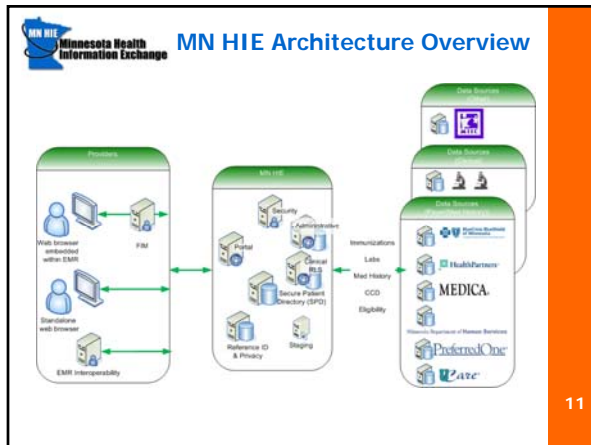
Minnesota Health Information Exchange Roadmap to Meaningful Use

Meaningful Use	
Stage 1 2011	Medication History Lab History Continuity of Care Document Exchange Eligibility Immunization History and Submission Capability ePrescribing Radiology History Allergies and Alerts Exchange Problem List Exchange Procedure List Exchange Public Health Reporting Discharge Summaries Exchange Quality of Care Reporting
Stage 2 2013	Document Push Capability Lab Ordering and Results Delivery* Radiology Ordering and Results Delivery* Establish State-wide Provider Directory Clinical Messaging* Secure Email Exchange of other Text Documents Additional Diagnostic Test History Manage Consumer Preferences Specialty Reporting to Device and Disease Registries
Stage 3 2015	Connectivity to the National Health Information Network Multi-media support (Exchange of Images) Medical Device Interoperability Additional Quality of Care Reporting Connection to Trauma, Traumatic Brain Injury and Spinal Cord Registries Support for Advanced Directives Home Monitoring Interoperability

Meaningful Use Requirements will change as regulations are further defined. * Additional charges may apply.

9






MN HIE Benefits

HIT is cornerstone of health care reform (includes ARRA Meaningful Use provider incentives)


- Access to patient medical information from external sources to enhance patient care
- MN HIE is a statewide Health Information Organization (HIO) in Minnesota
- State-wide network includes metro and rural communities
- Interoperability solution for connecting EHRs and PHRs
- Public/Private partnership results in lower cost solution for participating organizations vs. for-profit suppliers of services
- Direct benefits:
 - Increased patient safety
 - Improved quality of care
 - Improved efficiency of participating providers
 - Better coordination of care



MN HIE Experience

- Value Proposition
 - One Stop Shop for Eligibility, no transaction fees
 - Reduction in redundant or repeat testing
 - Avoidance of clinical errors
 - Quicker access to relevant clinical information
 - Increased Patient Satisfaction
 - Eventual reduction in staff time and effort (i.e. Public Health Reporting)
- Lessons learned
 - Privacy and Security need to be addressed up front
 - Workflow matters
 - Data Sharing is a cultural challenge
 - On-boarding and Training critical to success
- Feedback from MN HIE Users
 - Intuitive to Use
 - Valuable Data – would miss it if taken away

13



MN HIE Why Now?

- 2011 is next year
- Become an early adopter: ability to influence development, become a part of new User Group
- Meaningful Use Stage 1 is close to finalization – MN HIE services will meet exchange requirements
- Ability to view patient specific data from different clinical sources
- MN HIE provides neutral access to data – regardless of what EHR you have (or don't have)
- You can start now – do not need to wait until you have an EHR
- You can use MN HIE to exchange information with referrals or when your patients are outside your care system

14



MN HIE Questions?

For Further Information Contact:

Michael Ubl
 MN HIE Executive Director
michael_ubl@mnhie.org
 952-967-6740

Anne Dobbins R.N.
 MN HIE Operations Director
annedobbins@mnhie.org
 651-747-7867

www.mnhie.org
info@mnhie.org
